

Build Mobile and Web Applications for worldwide markets, quickly and easily

Omnis Studio 5 supports Windows Mobile® and Unicode data, allowing you to reach any market, on any platform, anywhere in the world

Computing is becoming more mobile with laptops and other handheld devices now outselling traditional desktop computers. The leading growth area in the mobile or cell phone market is for so-called 'smartphones', which have all the familiar features of mobile phones but they also have additional features such as WiFi connectivity, satellite positioning (GPS) and support for professional office applications like email, word processing, and spreadsheets. These mobile devices are becoming the must-have device for business people, allowing them to communicate while out of the office, to have access to critical data, and to organise their work and family life more flexibly.

With the release of Omnis Studio 5, you can take advantage of this mobile revolution, by creating applications that support Windows Mobile and all the new smartphones and other devices coming onto the market. Combined with all the other great features in this new version, including full support for Unicode compatible data, Omnis Studio 5 will allow you to reach new customers, on the new mobile platform, in completely new markets.

The All New Omnis Mobile Client

Omnis Studio 5 includes a new version of the Omnis Web Client plug-in that supports applications running on Windows Mobile® based devices. The new mobile enabled client is called the **Omnis Mobile Client**, and runs inside a small, stand-alone program, which is downloaded to the mobile device along with the client.

Omnis Studio allows you to run your application on the Web or on Mobile devices using a special layout class called a **Remote Form** –you can create layouts for both web and mobile formats using the same remote form, so your business logic can be used all types of client. Testing your mobile forms is easy as well -- your computer and mobile device are connected using Windows Mobile Device Center (previously called ActiveSync), and once set up, testing your Omnis remote forms on the device itself is as easy as pressing Ctrl-T!

The Omnis Mobile Client runs on version 5.0, 6.0 and 6.1 of Windows Mobile from Microsoft®. Specifically, the new client has been tested on the new breed of smartphones which run Windows Mobile 'Professional'. These phones have all the usual phone capabilities for voice calls and text messaging, together with touch sensitive screens, PDA functionality, and the mobile version of Word, Excel and PowerPoint.



Why Windows Mobile?

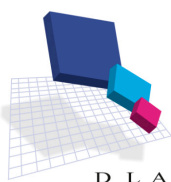
Microsoft Windows Mobile has around 13% of the market for smartphones (source: Canalys), with a far higher percentage of the business and professional software sector for mobiles. The Windows Mobile platform shows potential for growth given the overwhelming support from handset manufacturers, the network service providers around the world, and the continuing leverage of Microsoft in the corporate and development software market.

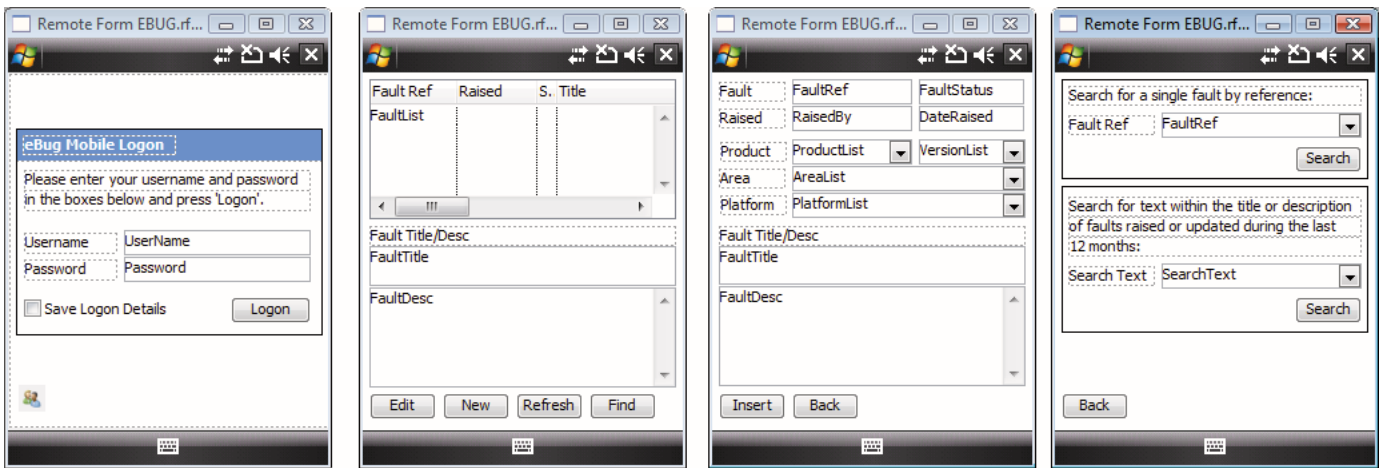
Creating Mobile Forms

In Omnis Studio 5 you can design multiple layouts for the same remote form, catering for web and mobile clients in one single form. The new remote form property \$screensize can be set to Desktop monitors, as well as Portrait or Landscape for mobile screen sizes. The fields on your form can be arranged for the different layouts, but only one set of methods, for fields and the form itself, is required. When you are designing a remote form for mobile, the Windows Mobile titlebar and menubar are displayed in the design window to give an authentic look.

There are many different screen sizes and resolutions for mobile devices. The new version of Omnis Studio will support the most common, which are:

- 240x240, 240x320, 320x320, 480x800 screens
- Some sizes support Portrait or Landscape which allows end users to easily switch format.





In Omnis Studio 5, you can create many types of application for Windows Mobile based Smartphones and other mobile devices. Forms can include many different controls including fields, buttons, lists, grids, and droplists (as shown above). Once set up, you can easily test a form in design mode by pressing Ctrl-T, which opens the form on your mobile device automatically.

Testing Mobile Forms

Omnis Studio 5 allows you to test a remote form running on a Windows Mobile based device using Windows Mobile Device Center (ActiveSync on older platforms). Once your PC and Smartphone are setup, developing and testing your mobile form is very easy. You can set up your computer and mobile device to test your form as follows:

- Using a USB cable or cradle, connect your Smartphone or other mobile device to the PC running Omnis Studio
- Check that the device can use the PC's Internet connection, for example, by running Mobile IE on the device
- Open the Omnis preferences in the Property Manager, and set the \$webbrowser property to run on your mobile by clicking the 'Windows Mobile' button

From there on, whenever you test the remote form from within the IDE, the form will open on your mobile device. When you press Ctrl-T, Omnis checks to see if the client is present and up-to-date on your mobile device, and if not, it installs the client automatically. Omnis also checks individual components within the form and updates them if required via the Omnis Component Manager. You can change the form as much as you like and continue to test it using Ctrl-T.

The Smartphone Market: the Latest Information...

According to **Canalys**, global shipments of smartphones hit a new peak of just under 40 million units in Q3 2008, up from previous years. Smartphone sales are likely to increase as users replace old handsets and new markets open up in developing countries:

Source: www.canalys.com/pr/2008/r2008112.htm

According to the **Handango** annual 'Yardstick' year-end survey for 2007, of applications sold, **19%** of the total applications sold on Windows Mobile (Pocket PC) were *Business & Professional* applications, while only 4% on Symbian (Nokia) were business oriented.

Source: <http://corp.handango.com>

The following companies all make Windows Mobile enabled devices:

- Samsung (Ace, BlackJack, Omnia)
- HTC (Touch series)
- Sony Ericsson (the new Xperia X1)
- Palm Inc (the new Treo)
- HP (iPAQ)

Configuring the Mobile Client

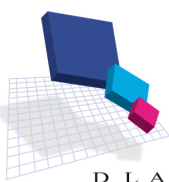
The forms you build in Omnis Studio are run inside the Omnis Mobile Client installed automatically on the mobile device. The mobile client is configured using a separate XML file, which specifies the application name, form name, Omnis Server location, and any other additional parameters. The Omnis Server itself runs your application, executing the business logic and processing the data retrieval and updates.

The End User Experience

End users need to install the Omnis Mobile Client onto their mobile device by downloading and running a cab file containing all the necessary components. When the end user displays a form in your application, the most appropriate screen size and orientation is chosen for the device, and they can switch between portrait and landscape orientation automatically (assuming you have designed the form with multiple layouts).

Users can navigate the form using the standard left, right, up and down arrow keys on the device, or using the touchscreen or stylus, while data can be entered using the keypad. In addition, you can now add context menus to remote forms, which on Windows Mobile appear in the menubar on the device, adding further interactivity.

Windows Mobile® is licensed to 4 out of the top 5 phone manufacturers.



D L A
The DLA Group Pty Ltd

Telephone: (+61 2) 9555 4777 · Email: sales@dlaaroup.com.au · Web: www.dlaaroup.com.au